

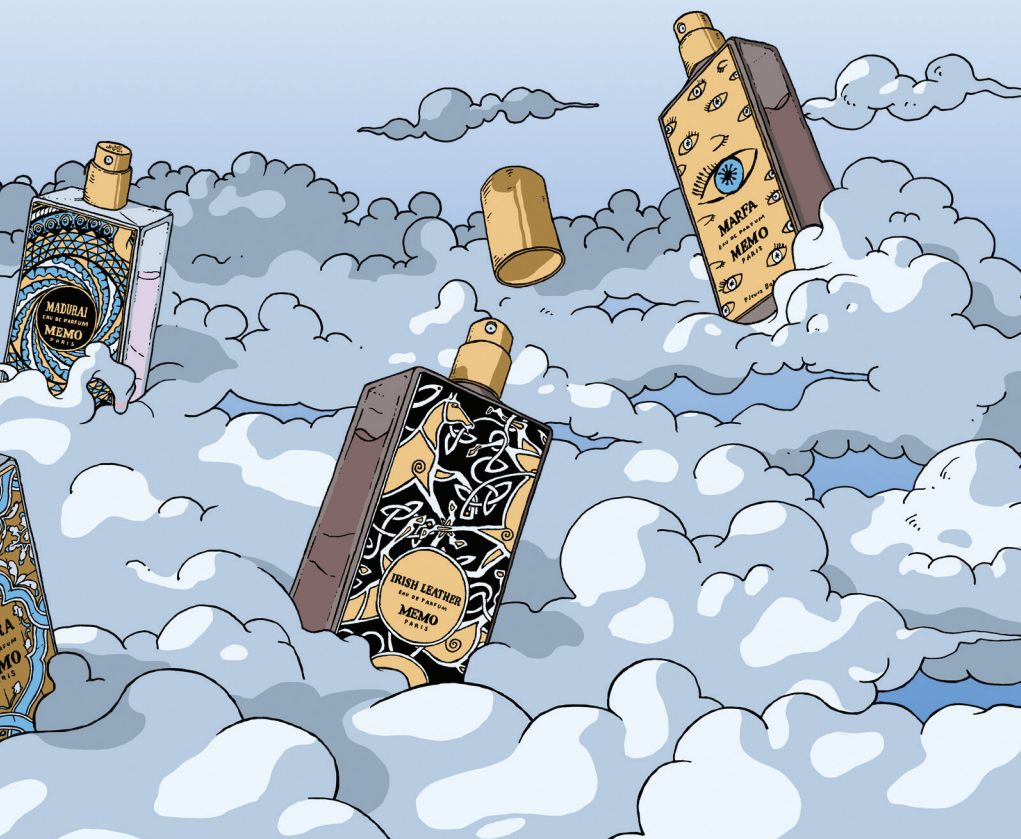
SOFITEL

LONDON ST JAMES



MEMO

PARIS



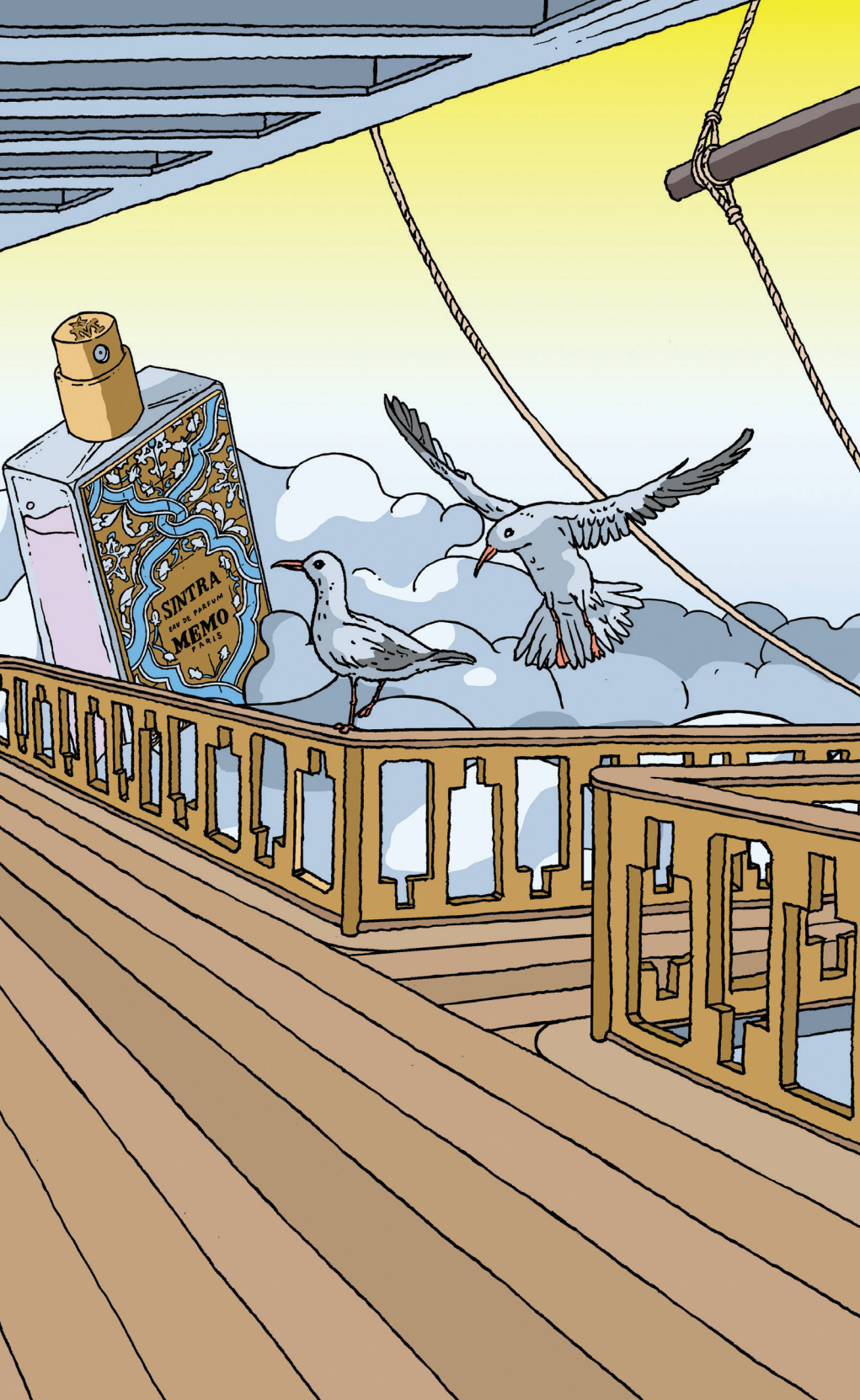
A ROSE-INSPIRED MOTHER'S DAY AFTERNOON TEA

Step into our Rose Lounge, where the charm of French sophistication meets the quintessential British afternoon tea tradition. Our new menu, inspired by Memo Paris's Portobello Road fragrance, promises a sensory journey that will captivate your senses. Experience the delicate blend of rose and mandarin notes infused into our offerings, taking your finely cut sandwiches to another level with brioche, croissant and baguette.

Sip and savour from a curated selection of a wide variety of loose-leaf teas, each paired perfectly to elevate your experience and complement the exquisite creations crafted by Head Pastry Chef Lerrick Coelho. As the *pièce de résistance*, Chef Coelho has curated a special Portobello Road-inspired cake, harmonising the essence of the fragrance with delightful flavours.

To transform your experience into a celebration of elegance, we offer a complimentary glass of Rose Fizz to our traditional afternoon tea, setting you out on a fragrant journey.

Traditional Afternoon Tea	£70
Champagne Afternoon Tea	£80
Children's Afternoon Tea	£40



SAVOURY SELECTION

Smoked chicken coronation with macerated
golden raisins on toasted croissant

Cornish crab roll with crème fraîche, chives,
a hint of Dijon mustard, trout roe

St. Ewe's eggs with black truffle mayonnaise
on brioche bread

Rillettes of lentils & butternut pumpkin with
Provincial herbs on baguette

John Ross smoked Scottish salmon with
horseradish crème, pickled fennel, lemon confit

.....

SPECIAL

Sac à Main

Inspired by Memo Paris Portobello Road

*Rose petal & Yorkshire rhubarb, mandarin,
vanilla crème*

.....

CAKE SELECTION

Yellow carnival passionfruit,
mango & coconut sphere
Coconut mousse, mango & passionfruit gel

Mint green pistachio & raspberry choux
Pistachio crème, raspberry confit, mousseline

Violet, berries & vanilla tartelette
Vanilla crème, berry frangipane

Gold chocolate & Earl Grey Opéra
Earl Grey chocolate ganache, almond Joconde

Freshly baked scones
*Plain & cranberry scones served with clotted
cream & Rose Lounge signature rose &
strawberry jam*

Food Allergy advice. We welcome enquiries from our guests who wish to know
whether any meals contain particular ingredients. Please ask a member of staff
and we will be happy to help.

BEVERAGES

SIGNATURE COCKTAIL

Rose Fizz cocktail £16

*Tanqueray gin, raspberry cordial,
Jasmine Pearl tea, dry vermouth and Champagne Brut*

.....

CHAMPAGNE

NV Laurent-Perrier La Cuvée, <i>Tours-sur-Marne</i> NV	£18 / £89
Drappier Carte d'Or Brut Blanc de Noirs, <i>Urville</i> NV	£25 / £125
Laurent-Perrier Cuvée Rosé, <i>Tour-sur-Marne</i>	£28 / £155
Hundred Hills Preamble n.2, <i>Oxfordshire, England</i>	£19 / £95
Rathfinny Brut Rosé, <i>Sussex, England</i>	£22 / £115
NV Bollinger Special Cuvée Brut, <i>Aÿ</i>	£145
NV Ruinart Blanc de Blancs, <i>Reims</i>	£170
NV Ruinart Rosé, <i>Reims</i>	£180
2012 Bollinger La Grande Année Brut, <i>Aÿ</i>	£290

.....

NON-ALCOHOLIC

NV Saicho Single Original Jasmine Tea	£14 / £72
---------------------------------------	-----------

All prices are inclusive of VAT.

A discretionary 15% servicecharge will be added to your bill.

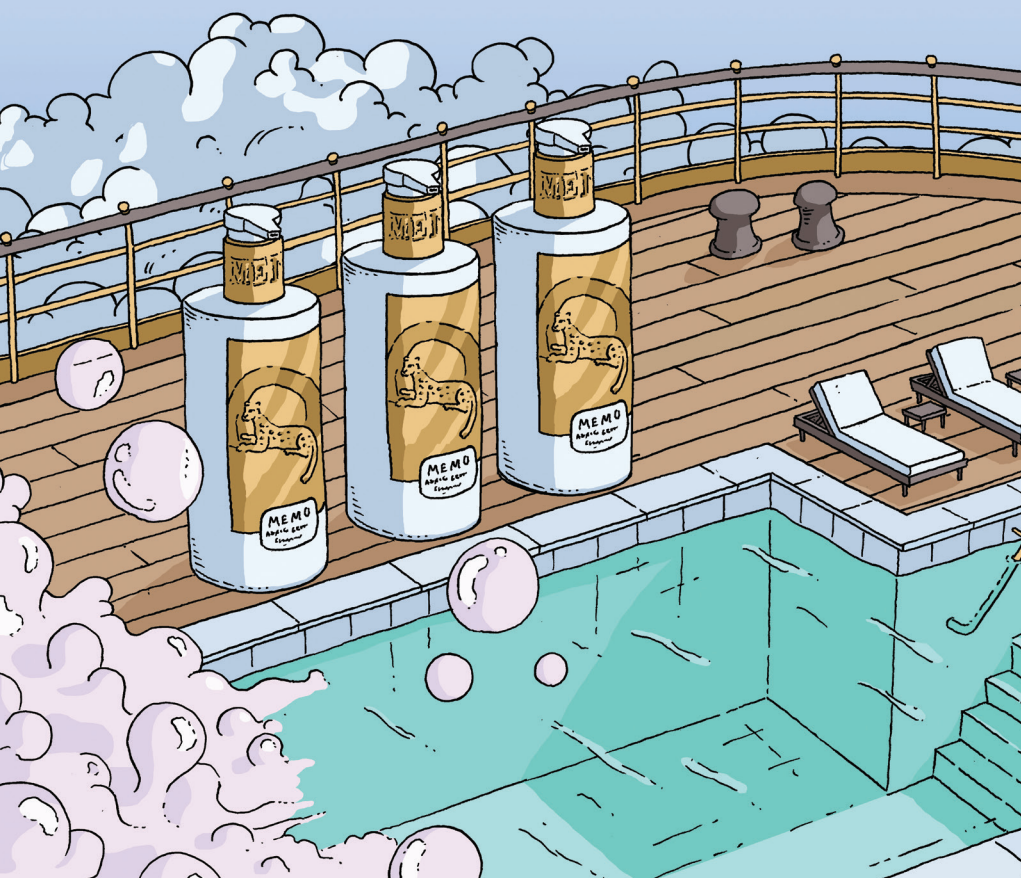
MEMO

PARIS

www.memoparis.com

📍 memo.paris

📌 Memo Paris - Fragrances



SOFITEL

LONDON ST JAMES



www.sofitelstjames.com

@ sofitellondon

f Sofitel London St James

