



A
**BLOOMING
BRITISH**

VALENTINES AFTERNOON TEA

A celebratory afternoon tea with the
Natural History Museum

*Supporting a future where people
and pollinators thrive*



Natural
History
Museum

ROYAL
LANCASTER
LONDON

Introduction

Welcome to A Blooming British Afternoon Tea in collaboration with the Natural History Museum; a floral-inspired twist on a quintessentially British tradition, in a celebration of the beautiful flowers and precious pollinators on our doorstep.

Taking inspiration from artworks held within the Museum's archives, their newly transformed gardens that provide a haven for people and wildlife, and the idyllic 30-minute nature walk across leafy Hyde Park that brings us together, our talented pastry team have created a thoughtful menu that beautifully honours the elegance of British flora and fauna, using locally-sourced, seasonal ingredients.

This special collaboration combines the Museum's expertise and work to protect the natural world, with our ongoing sustainability efforts, and a shared passion for pollinators. Royal Lancaster London became the first hotel in central London to install beehives on our roof in 2009, and we continue to support beekeeping around the world to this day.

Together, we support a future where people and pollinators thrive.

Prices

£65 Saturday and Sunday

£30 Children's Afternoon Tea

Make it extra special...

£15 *Nyetimber Classic Cuvee MV*

£18 *Nyetimber Rosé MV*

£17 *Taittinger Brut Reserve NV, France*

£20 *Taittinger Brut Prestige Rose NV, France*

£9.50 *Noughty Sparkling Chardonnay non-alcoholic sparkling wine*

£9.50 *Noughty Sparkling Rose non-alcoholic sparkling wine*



Bespoke Teas

from Camellia's Tea House

The Royal Lancaster Afternoon Blend

A bespoke blend created to complement the savoury selection of our celebratory afternoon tea. An unusual combination of timeless English Breakfast, warm woody China Keemun with the floral notes of calming chamomile. This is a tea to relax with and savour time well spent with friends and loved ones.

The Pollinator Blend

Created exclusively for Royal Lancaster London, in partnership with the Natural History Museum, the Pollinator blend marries black teas from Darjeeling and China with cornflower, rose and marigold petals and the final flourish of organic bee pollen. Full of health-giving properties, the bee pollen adds a sweet honeyed note to this delightful celebration of the insects which keep Mother Nature in timeless bounty.



*Scan the QR code
to view allergen
information*

A Blooming British Afternoon Tea

SAVOURY

A selection of traditional sandwiches

Maize-fed chicken with bee pollen on white bread

Smoked Salmon, cream cheese and dill
on wholemeal bread

Classic egg mayonnaise with flowering chives
on wholemeal bread

Cucumber with salted butter on white bread



SCONES

Warm homemade scones served with clotted cream
and a selection of preserves



SWEET

A selection of pollinator-themed sweet bites

The Beehive

Coconut yogurt mousse, soft vanilla and blackberry compôte, maple cake

Pear Baba

English Williams pear, sparkling wine-soaked baba, Chantilly cream

Heart And Rose

Vanilla mousse, raspberry lychee and rose confit, shortbread

The Chestnut Tree

Chestnut vermicelli, blackcurrant cômposite

A discretionary 12.5% service charge will be added to your bill.

A Blooming British Vegan Afternoon Tea

SAVOURY

A selection of traditional sandwiches

Avocado and confit tomato chutney with coriander cress on wholemeal bread

Beetroot Hummus and pickled carrots on wholemeal bread

Tomato, vegan mozzarella and basil pesto on white bread

Classic cucumber on white bread



SCONES

Warm homemade scones served with coconut cream and a selection of preserves



SWEET

A selection of pollinator-themed sweet bites

The Beehive

Coconut yogurt mousse, soft vanilla and blackberry compôte, maple cake

Pear Baba

English Williams pear, sparkling wine-soaked baba, Chantilly cream

Heart And Rose

Vanilla mousse, raspberry lychee and rose confit, shortbread

The Chestnut Tree

Chestnut vermicelli, slow cooked blackcurrant

A discretionary 12.5% service charge will be added to your bill.

A Blooming British Children's Afternoon Tea

SAVOURY

A selection of miniature sandwiches

Chicken with mayonnaise on white bread

Cucumber and cream cheese sandwich on wholemeal bread

Egg sandwich on white bread



SCONES

Warm homemade scones served with clotted cream
and a selection of preserves



SWEET

A selection of pollinator-themed sweet bites

The Ladybird

Light vanilla mousse, caramelised apple, sablé Breton

Chocolate Seedball

Milk chocolate mousse, chocolate sponge

Butterflies & Berries

Vanilla cheesecake, mixed red berry compôte

Did you know...?

While honeybees get a lot of the credit, at least 1,500 insect species pollinate plants in the UK. In some parts of the world, birds, bats and even lizards get involved too!

For an animal to be an effective pollinator it needs to actively visit flowers of the same species and be capable of carrying pollen on its body (often unintentionally) so that it transfers from one flower to another.

Adult butterflies and moths will feed on almost any flower's nectar, but caterpillars are fussier, so try planting a variety of flowers to encourage more insects to visit your garden.

Beetles are attracted to flat, open flowers which allow them to graze, and flowers in clusters, such as cow parsley. The flowers tend to be smelly or fragrant, because beetles navigate by a strong sense of smell.

There are just 57 resident butterfly species in the UK, compared to more than 2,500 moth species.

Things you can do to help:

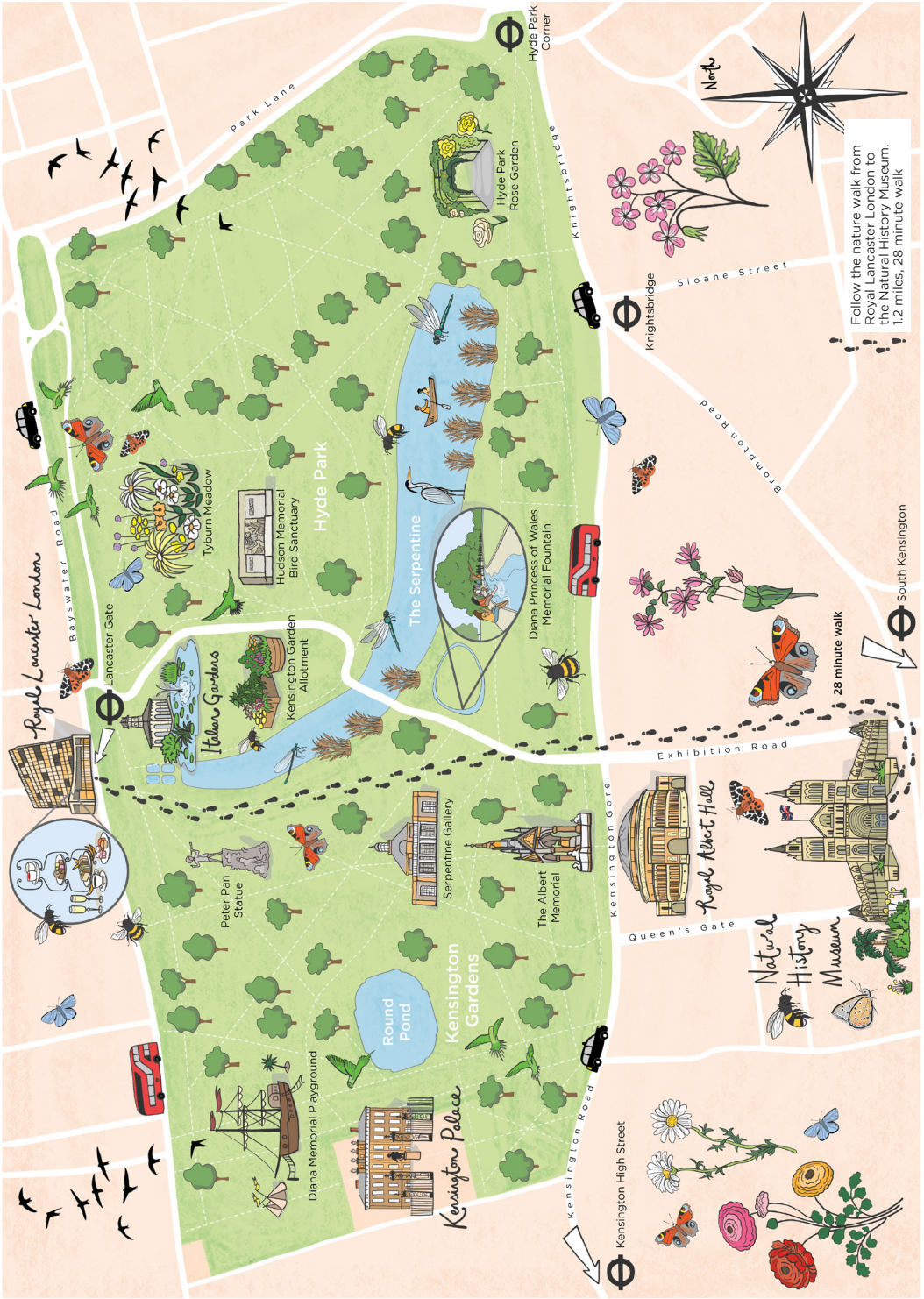
1. Grow pollinator-friendly plants in your garden or on your windowsill
2. Let your lawn grow a little wilder
3. Build a home for solitary bees

Cereals, such as wheat and barley, rely on wind pollination but just about every other plant we eat is actively pollinated. Tomato production relies on pollination by bumblebees, as do many other crops.

The list of insect pollinators is long and includes many different species of bees, flies, wasps, beetles, butterflies and moths. Pollinators carry pollen with them as they move from flower to flower.

Scan the QR code for 'How To' videos, and a digital version of our Nature Walk map.





Royal Lancaster London

Hyde Park

The Serpentine

Kensington Gardens

Kensington Palace

The Albert Memorial

Serpentine Gallery

Royal Albert Hall

Natural History Museum

Hyde Park Corner

Knightsbridge

Sloane Street

Exhibition Road

Queen's Gate

Kensington High Street

South Kensington

Follow the nature walk from
Royal Lancaster London to
the Natural History Museum.
1.2 miles, 28 minute walk

28 minute walk